

5-port Fast Ethernet Unmanaged Switch



FABIO-104



FABIO-104 PoE

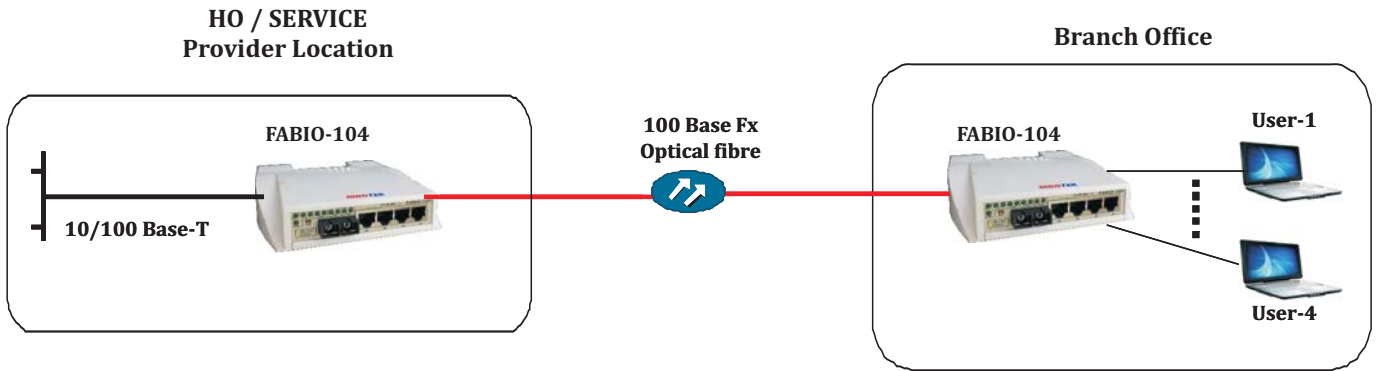
FABIO-104 is a 5-port Fast Ethernet Unmanaged switch, with optional PoE support. It provides four Fast Ethernet Copper and one Fiber Interfaces to enable connectivity for small business and enterprises.

In addition, the switch also has port-isolation and separation capabilities, which provides much needed security in Unmanaged network deployments.

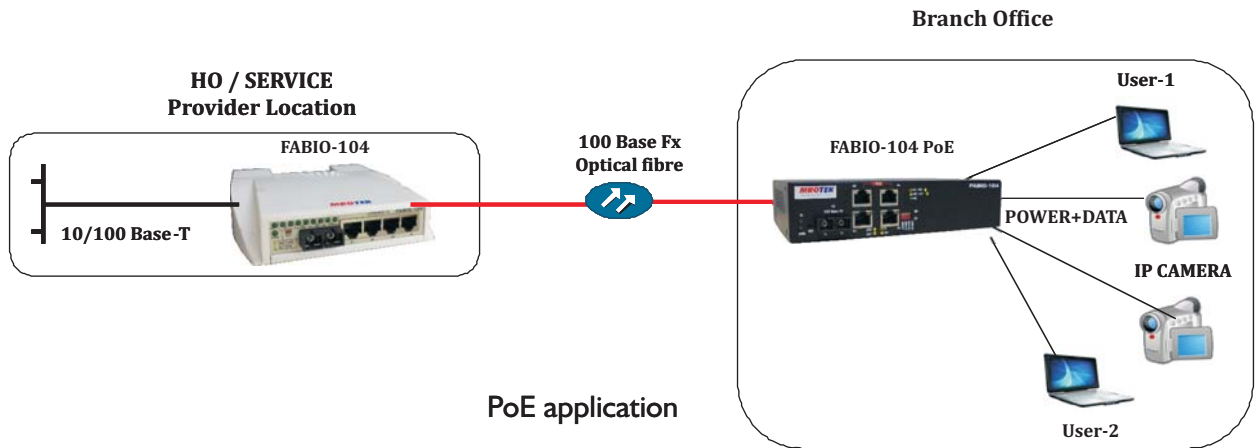
Key Features

- 5-port Fast Ethernet Switch with non-PoE and PoE capabilities
- Support for Auto Negotiation Enable/Disable for 4 Copper Ports via DIP switch settings
- Complies IEEE 802.3x, 802.3u
- Architecture : Store and forward
- Non-PoE variant supports 4 FE Copper Ports (RJ-45) and 1 Fiber 100B-X (SC connector)
- PoE variant supports
 - 2 FE Copper Ports (10/100) (RJ-45) with IEEE 802.3af support for PoE
 - 2 FE Copper Ports (10/100) (RJ-45)
 - 1 Fiber 100B-X (SC connector)
- PSE (Power Sourcing Equipment) which can source power to IEEE 802.3af compliant PD (powered device)
- Supports Port isolation and port separation
- Aggregator Mode support

Application



Non-PoE Application



Point-to-Point Application

Technical Specifications

- **Standards Compliance :**
IEEE 802.3x, IEEE 802.3u, 100BASE-T, 100BASE-FX
- **100BASE-T port :**
Shielded RJ-45
Half/Full Duplex support
Auto MDI-I / MDI-X
- **100BASE-X port :**
SC Connector
- **PoE features (PoE model only)**
 - 2 PoE Ports based on IEEE 802.3af
 - IEEE 802.3af compliant PD detection with DC disconnect sensing
 - Supports short circuit protection
 - Max PoE Power ~ 13W
- **LED Indicators:**
 - PWR (green) : Power status
 - LNK/ACT (green) : Link / Activity Status for Ethernet ports
 - 10/100 : Speed of Copper port Link
 - PoE (green) : PoE status (for PoE model only)
- **DIP Switch (4-pin)**
- **Power**
100 ~ 240V AC input : Non-PoE & PoE model
Power consumption (non-PoE): 2.75V (typical)
- **Operating Temperature :**
0° – 50°C / 32° – 122°F
- **Humidity :**
10% to 90%, non-condensing
- **Dimensions (WxHxD) mm:**
 - Non-PoE model : 155 x 43 x 165
 - PoE model : 190 x 44 x 132
- **Weight** : 375 gms (non-PoE)
: 1000 gms (PoE)

Fiber optic specifications

Module Type	Wavelength (nm)	Fiber Type (µm)	Typical TX Power (dBm)	Typical Rx Sensitivity (dBm)	Typical Range (Km)
MM	850	62.5/125 Multimode	-6.5	-20	2
MM	850	50/125 Multimode	-6.5	-20	2
MM	1310	62.5/125 Multimode	-14	-26	2
SM15	1310	9/125 Single mode	-12	-29	15
SM15	1550	9/125 Single mode	-12	-27	15
SM40	1310	9/125 Single mode	-2.5	-29	40
SM60	1310	9/125 Single mode	-2.5	-29	60
SM80	1310	9/125 Single mode	2.5	-30	80
SM80	1550	9/125 Single mode	-2.5	-29	80
SM100	1550	9/125 Single mode	0	-30	100
SF15	1310/1550	9/125 Single mode SF	-9.5	-27	15
SF40	1310/1550	9/125 Single mode SF	-2.5	28	40
SF100	1490/1550	9/125 Single mode SF	-2	28	100

Ordering FABIO-104

FABIO-104/#/SC/AC		5-port Fast Ethernet switch, four 10/100 Base-T copper ports (RJ-45), one 100Base-FX fiber port (SC), operating on AC power
FABIO-104 PoE/#/SC/AC		5-port Fast Ethernet switch with PoE facility, with two 10/100 Base-T FE copper ports (RJ-45), two FE PoE (RJ-45) ports and one 100Base-FX fiber port (SC), operating on AC power
	#	MM 850 for (62.5/125) MM fiber 2 Km
		MM 850 for (50/125)MM fiber 2 Km
		MM 1310 for MM fiber 2 Km
		SM15 (1310) for SC fiber 15 Km
		SM15 (1550) for SC fiber 15 Km
		SM40 (1310) for SC fiber 40 Km
		SM60 (1310) for SC fiber 60 Km
		SM80 (1310) for SC fiber 80 Km
		SM80 (1550) for SC fiber 80 Km
		SM100 (1550) for SC fiber 100 Km
		SF15 (1310Tx / 1550Rx) for SM fiber 15 Km
		SF40 (1310Tx / 1550Rx) for SM fiber 40 Km
		SF100 (1490Tx / 1550Rx) for SM fiber 100 Km



MROTEK[®]
Integrating Next Generation Networks

MRO-TEK Limited
Bellary Road, Hebbal
Bangalore - 560 024, INDIA
Phone : +91-80-23332951
Fax : +91-80-23333415
Email : mrotek@vsnl.com
Web: www.mro-tek.com